

HUMAN

Humanities

Guide to Secondary 2 Streaming



Humanities Weighting

Paper 1 - 50% (Social Studies)

Paper 2 - 50% (Geography/History)

Social Studies Content Coverage

- 
- Issue 1: Exploring Citizenship and Governance
 - Issue 2: Living in a Diverse Society
 - Issue 3: Being Part of a Globalized World



Social Studies

Mode of Exam

Source Based Cased Study

5 sub questions: 35 marks

Structured Response Questions

2 sub questions: 15 marks

History

Content Coverage

20th Century World History

- The Paris Peace Conference and the League of Nations in the 1920s
 - Nazi Germany
 - Militarist Japan
- Outbreak of WW2 in Europe
- Outbreak of WW2 in Asia-Pacific

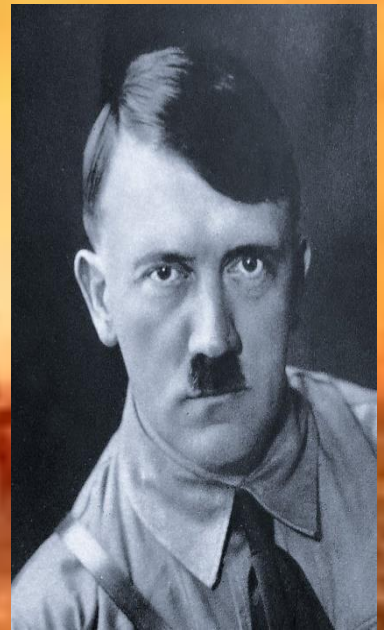


History

Content Coverage

20th Century World History

- The end of WW2 in Europe and the Asia Pacific
- Origins and Development of Cold War
 - Korean War
 - Vietnam War
- End of the Cold War

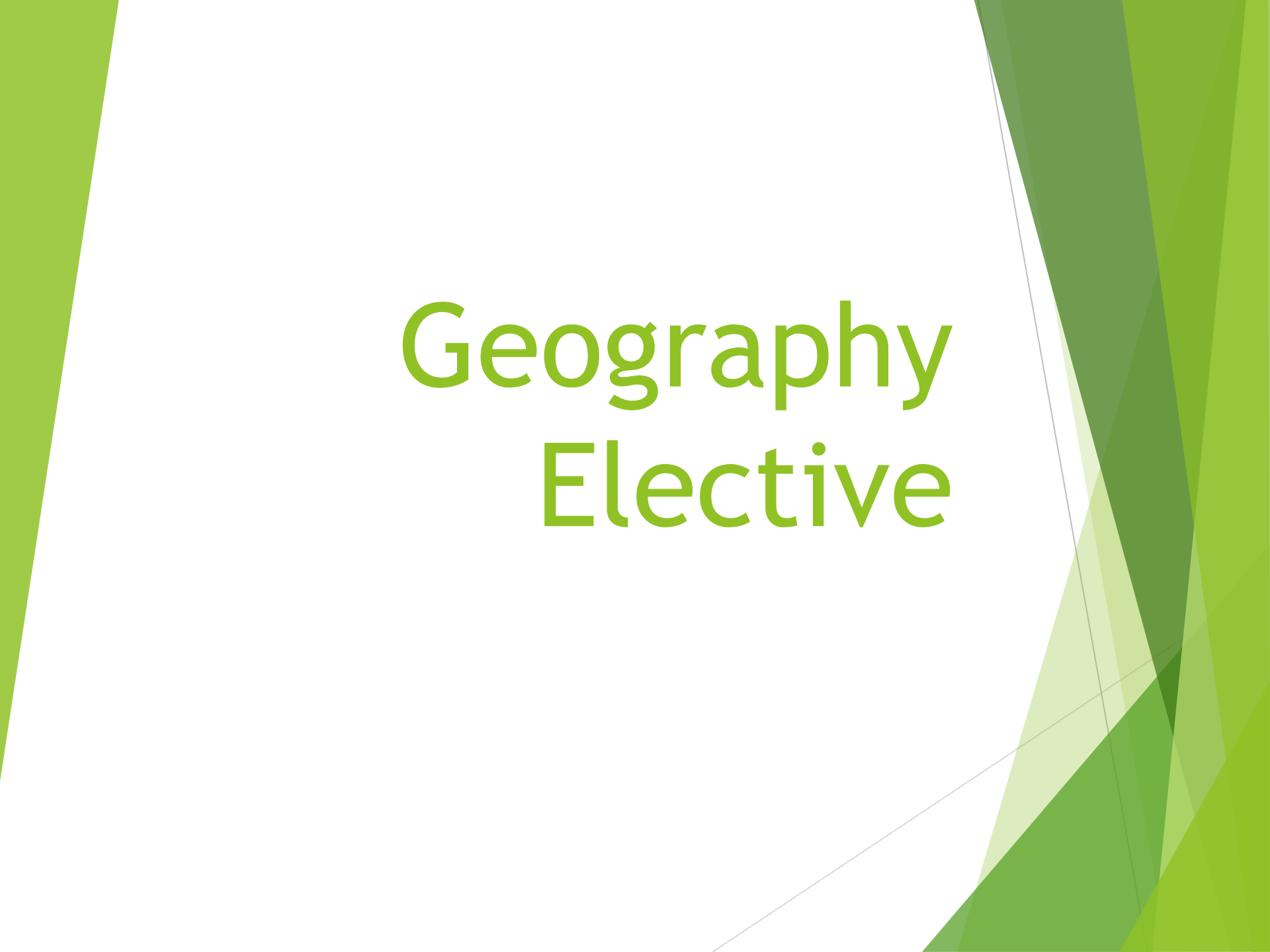


History

Mode of Exam

Source Based Cased Study
(5 sub questions): 30 marks

Essay Questions
(2 questions): 20 marks

The background features abstract, overlapping geometric shapes in various shades of green, ranging from light lime to dark forest green. These shapes are primarily located on the left and right sides of the page, framing the central text. The overall aesthetic is clean and modern.

Geography Elective

Cluster 1: Geography in Everyday Life

- Thinking Geographically
- Sustainable Development
- Geographical Methods



Cluster 2: Tourism

O-level
Only

- Tourism Activity
- Tourism Development
- Sustainable Tourism Development

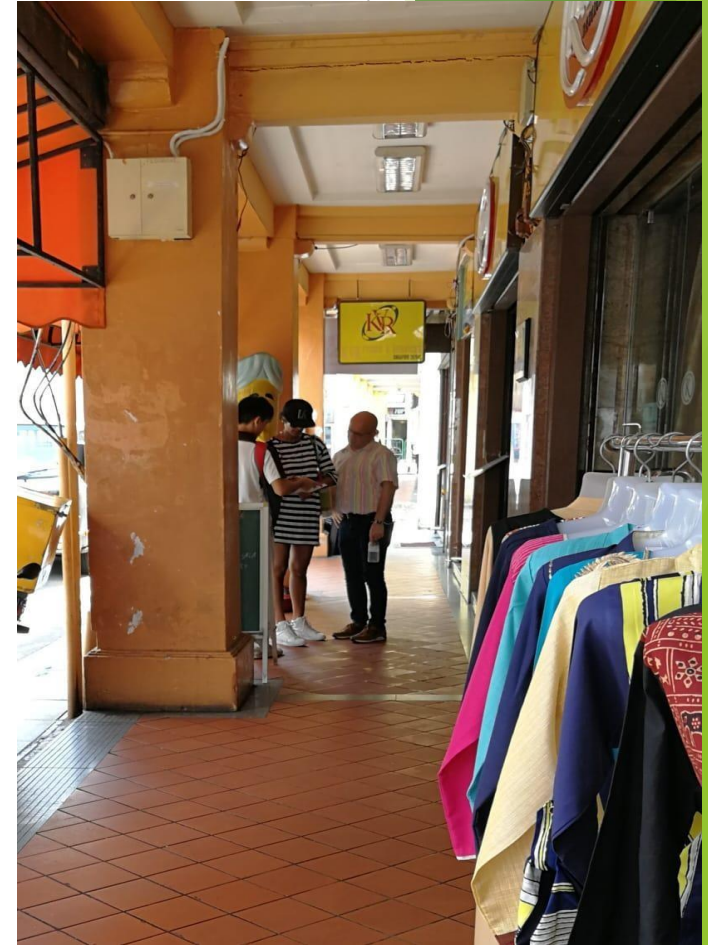
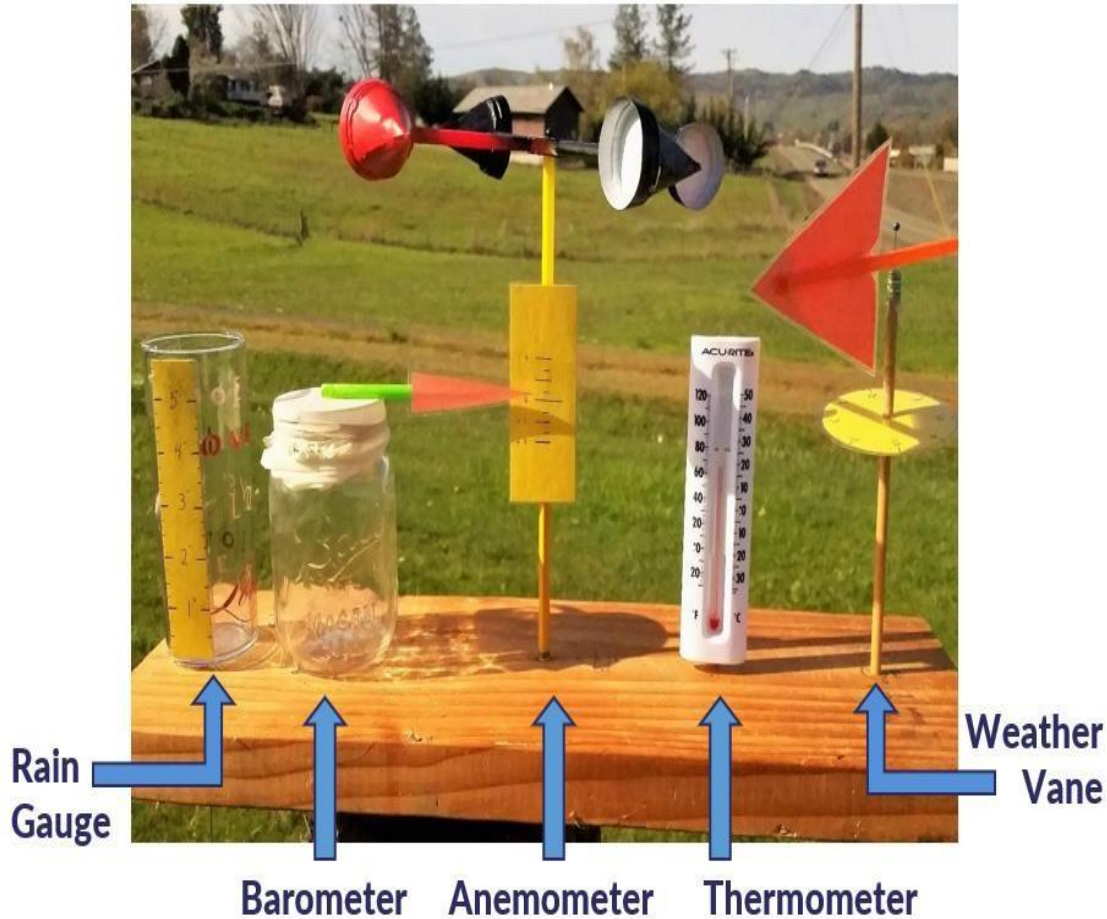


Cluster 3: Climate

- Weather and Climate
- Climate Change
- Climate Action



Bite-sized Fieldwork Experience



Exam Question Types

▶ Structured Questions

(39m for O-Level, 44m for N-Level)

- ▶ Data Interpretation Questions
- ▶ Content Questions
- ▶ Fieldwork Questions

▶ Level Descriptor Question (Essay)

(9m for O-Level, 6m for N-level)

- ▶ Require an evaluation of factors / strategies